

F2J TECHPLAST Córdoba



TECHPLAST

C O R D O B A





Overview Presentation

PART 1 General Overview

PART 2 Products

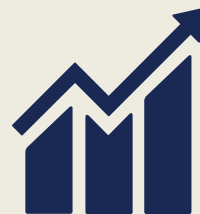
PART 3 Industrial Processes

PART 4 Main Investments

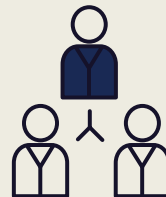
PART 5 About F2J Industry



Main Figures



Sales 2024 : 25,8 M€



330 Employees



Covered area: 16,000 m²

LEM - Product Portfolio



RENAULT



MODELS:

- KANGOO

PARTS:

- DOOR PANELS
- FR & RR BUMPRERS

ANNUAL VOLUME:

19,033 CARS



LEM - Product Portfolio



GM



MODELS:

- CRUZE

PARTS:

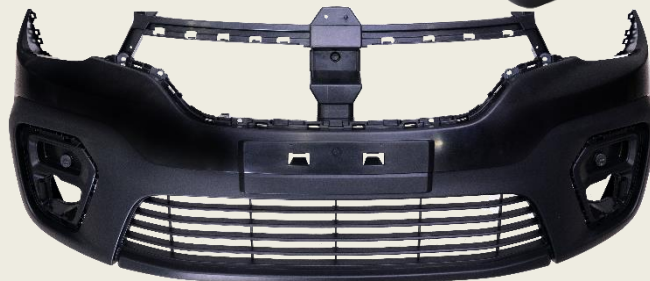
- INSTRUMENT PANEL
- DOOR PANELS
- CENTRAL CONSOLE
- IP HANG-ON PARTS
- GLOVE BOX

ANNUAL VOLUME:

13,125 CARS/YEAR



LEM - Product Portfolio



MODELS:

- FRONTIER
- ALASKAN

PARTS:

- INSTRUMENT PANEL & CENTRAL CONSOLE
- DOOR PANELS & BODY SIDE TRIM
- GLOVE BOX & IP HANG-ON PARTS
- FR&RR BUMPERS

ANNUAL VOLUME:

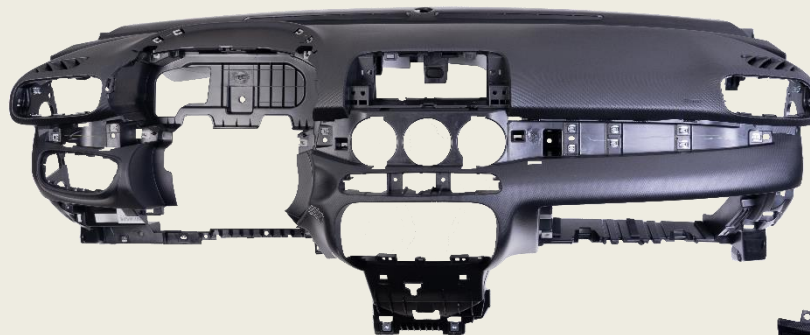
34,290 CARS

LEM - Product Portfolio



FCA

FIAT CHRYSLER AUTOMOBILES



MODELS:

- CRONOS

PARTS:

- INSTRUMENT PANEL
- DOOR PANELS
- CENTRAL CONSOLE
- GLOVE BOX



ANNUAL VOLUME:

86,052 CARS

LEM - Our Equipment



INJECTION MACHINES

14 plastic injection machines

800 ton - 950 ton = 4

1,000 ton - 1,300 ton = 6

1,800 ton - 4,000 ton = 4



LEM - Our Equipment



LASER WEAKENING MACHINES
FOR PASSENGER AIRBAG AREA
2 state of the art machines,
unique in the region

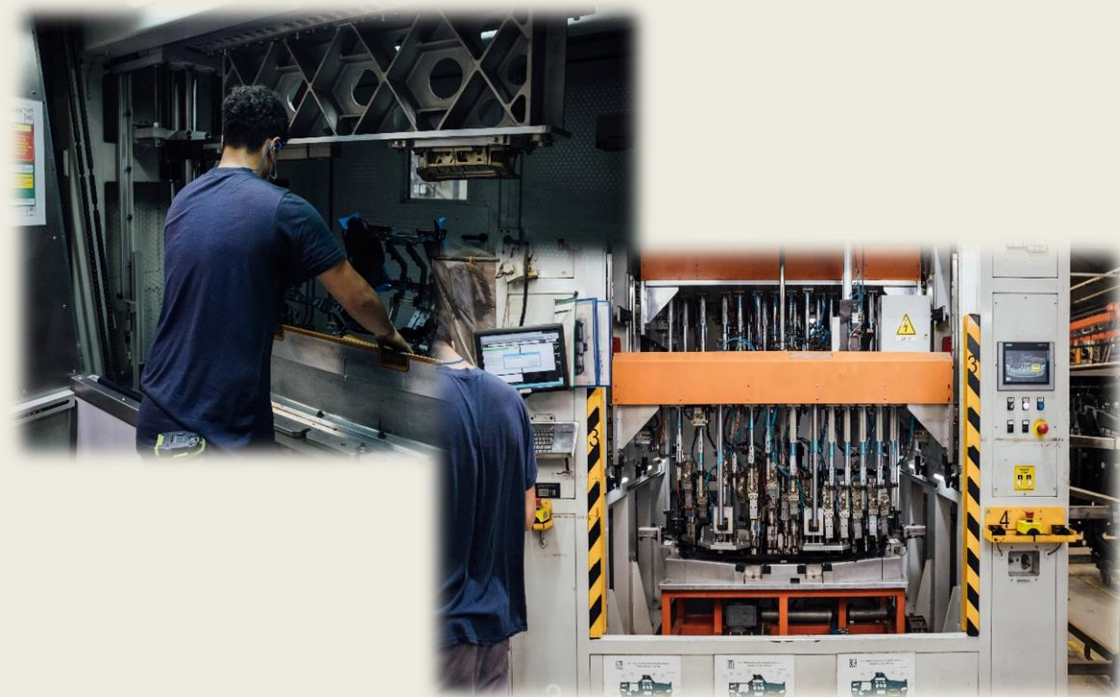


LEM - Our Equipment



WELDING MACHINES

31 vibration & ultrasonic
state of the art welding
machines



LEM - Our Equipment (cont'd)

PAINT LINE

State of the art paint line for interior parts (acrylic, PU and soft paint).





LEM - Our Equipment (cont'd)

ASSEMBLY LINES

Dedicated assembly lines, tailored for each product with world class quality standards.



LEM - Our Equipment (cont'd)

METROLOGY LAB

State of the art metrology lab, capable of handling simultaneously +300 checking fixtures, fully equipped with three 7-axis laser scans





Main Investments

- ⌘ Retrofit of two injection machines: Italtech 1200 t and Italtech 1800 t.

- ⌘ Replacement of three injection machines robots for Competella MC4-3H robots.

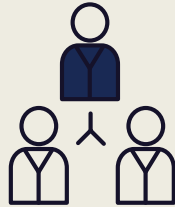
- ⌘ New ERP system: Totvs.

- ⌘ Linked to potential new businesses:
 - ⌘ Covered area for the shipping of finished goods.
 - ⌘ Drive through racks with 2 (two) special forklifts.
 - ⌘ Extension of a current building to add a new injection machine.

ABOUT F2J INDUSTRY...



Turnover: 195 M€



1 650 employees



4 plants in France
1 plant in Poland
3 plants in Argentina
1 plant in Brazil
2 plants in Spain
1 plant in USA



<http://f2jindustry.com>



<https://www.linkedin.com/company/f2jindustry>

F2J INDUSTRY INDUSTRIAL GROUP OF COMPANIES



THANK YOU FOR
YOUR ATTENTION



TECHPLAST
C O R D O B A

