



# F2J LIGHTING CORDOBA

---





# Overview presentation

PART 1	ABOUT F2J LIGHTING CORDOBA...
PART 2	FIGURES REPRESENTING F2J LIGHTING CORDOBA
PART 3	OUR PRODUCTS
PART 4	OUR PROCESS
PART 5	OUR MACHINES
PART 6	NEW PROJECTS
PART 7	OUR CUSTOMERS
PART 8	ABOUT F2J INDUSTRY...



# ABOUT F2J LIGHTING CORDOBA...



- 1959 METALURGICA AMERICANA (production of HL)
- 1988 New facility (current one)
- 1990 CIBIE ARGENTINA S.A. (Valeo holds 92% of the capital)
- 1994 National Quality Award
- 1996 Valeo holds 100% of the capital of CIBIE ARGENTINA

- 2007 PC Lenses integration
- 2010 Reorganization in Mercosur Division
- 2012 BMC reflectors integration
- 2018 F2J holds 100% of the capital of CIBIE ARGENTINA SA

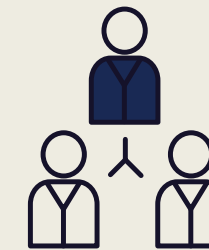
# FIGURES REPRESENTING F2J LIGHTING CORDOBA



CORDOBA



TURNOVER 2024 : 29,4 M €



230 EMPLOYEES



12 353 M2 FACTORY SURFACE



HL 400.000 PARTS / YEAR



RL 800.000 PARTS / YEAR

## HEADLAMPS



## REAR LAMPS





# OUR PROCESS



RAW MATERIALS



THERMOPLASTIC MOLDING



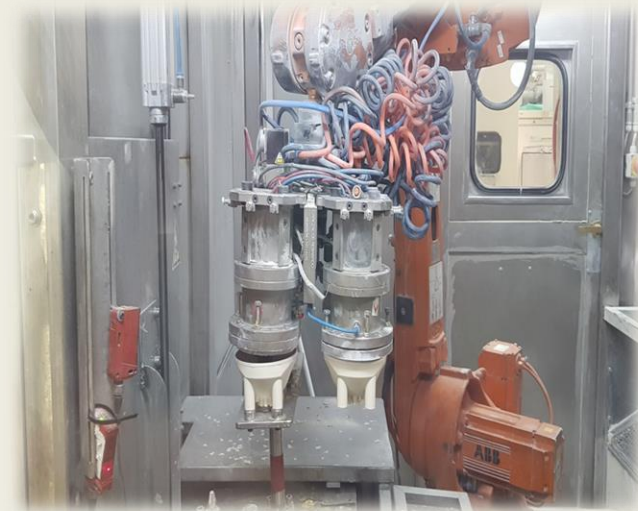
BMC



POLYCARBONATE LENS COATING



REFLECTORS COATING



DELIVERY



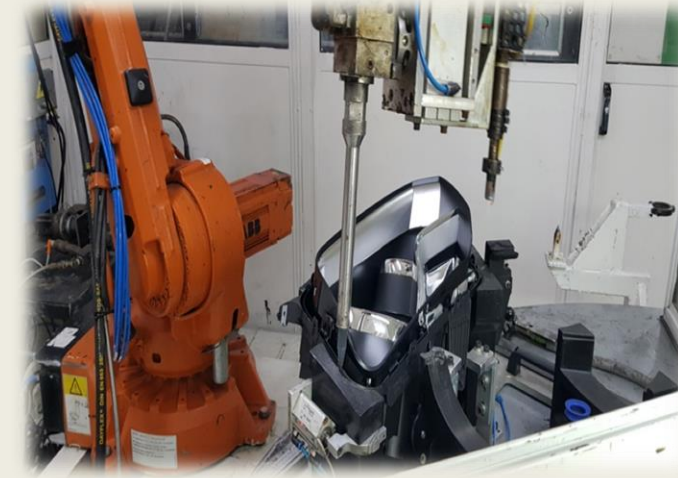
PACKAGING



ASSEMBLY



REFLECTIVE PARTS METALLIZATION





## INJECTION PRESS MACHINES

13 MACHINES  
300 T to 1 300 T



## LENS COATING & BMC REFLECTOR COATING LEAN



## ASSEMBLY

3 LINES FOR HL  
4 LINES FOR RL





## → F2J LIGHTING CORDOBA PLANT'S MODERNIZATION

- ✓ NEW BUILDING FOR TOOLING STORAGE
- ✓ DISASSEMBLY OF THE TENT & EXTERIOR 5S
- ✓ NEW BUILDING FOR RAW MATERIAL STORAGE
- ✓ EXTENSION OF THE ROOF AND INJECTION WORKSHOP (FOR NEW MACHINE INSTALLATION)
- ✓ EXTERIOR 5S
- ✓ BUILDING EXTENSION FOR SPARE PARTS STORAGE (MAINTENANCE)



FIND THE WHOLE VIDEO OF OUR PLANT'S MODERNIZATION ON THE FOLLOWING LINK :

<https://www.youtube.com/watch?v=eTLGI6XLNJY&t=3s>



# OUR CUSTOMERS

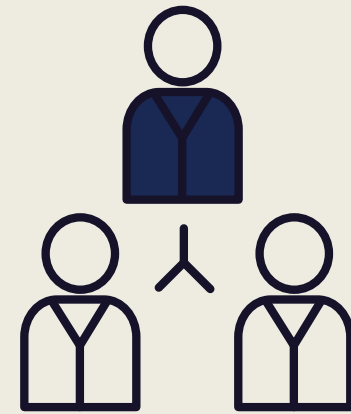




# ABOUT F2J INDUSTRY...



Turnover: 195 M€ 1 650 employees



4 plants in France  
1 plant in Poland  
3 plants in Argentina  
1 plant in Brazil  
2 plants in Spain  
1 plant in USA



<http://f2jindustry.com>



<https://www.linkedin.com/company/f2jindustry>



# F2J INDUSTRY INDUSTRIAL GROUP OF COMPANIES



**USA**

**MIASA**

Indiana  
 Turnover: 8,8 M € / 45 Employees  
 5.000 m<sup>2</sup> Factory surface  
 Certified IATF 16949

**ARGENTINA**

**F2J LIGHTING CORDOBA**

Córdoba  
 Turnover: 29,4 M € / 230 Employees  
 12.354 m<sup>2</sup> Factory Surface  
 Certified IATF 16949 and ISO 14001

**F2J TECHPLAST CORDOBA**

Córdoba  
 Turnover: 25,8 M € / 330 Employees  
 16.000 m<sup>2</sup> Factory surface  
 Certified IATF 16949 and ISO 14001

**F2J TECHPLAST BUENOS AIRES**

Buenos Aires  
 Turnover: 5,4 M € / 135 Employees  
 12.000 m<sup>2</sup> Factory surface  
 Certified: IATF 16949:2016 and ISO 14001

**BRAZIL**

**F2J LIGHTING ILHEAUS**

São Paulo  
 Turnover: 37 M € / 395 Employees  
 22.000 m<sup>2</sup> Factory surface  
 Certified IATF 16949

**SPAIN**

**F2J PAMPLONA**

Pamplona  
 Turnover: 6,5 M € / 34 Employees  
 7.000 m<sup>2</sup> Factory surface  
 Certified IATF 16949 and ISO 14001

**MIASA**

Zuera  
 Turnover: 23 M € / 95 Employees  
 6.000 m<sup>2</sup> Factory surface  
 Certified IATF 16949 and ISO 14001

**POLAND**

**F2J REMAN RADOM**

Radom  
 Turnover: 5,5 M € / 40 Employees  
 3.200 m<sup>2</sup> Factory surface  
 Certified IATF 16949 and ISO 14001

**FRANCE**

**AGLA FORM**

Auxi-le-Château  
 Turnover: 9,5 M € / 91 Employees  
 26.000 m<sup>2</sup> Factory surface  
 Certified IATF 16949

**F2J REMAN CHAUMONT**

Chaumont  
 Turnover: 10,9 M € / 66 Employees  
 9.700 m<sup>2</sup> Factory surface  
 Certified IATF 16949 and ISO 14001

**F2J STAMPING BESSINES**

Bessines-Sur-Gartempe  
 Turnover: 13 M € / 84 Employees  
 12.000 m<sup>2</sup> Factory Surface

**F2J J A P Y VALENTIGNEY**

Valentigney  
 Turnover: 20 M € / 105 Employees  
 18.894 m<sup>2</sup> Factory surface  
 Certified ISO 16949

Number of employees: **1650**

4 sites in France / 1 site in Poland / 3 sites in Argentina / 1 site in Brazil / 2 sites in Spain / 1 site in USA

Annual TO: **195 M€**



THANK YOU FOR YOUR  
ATTENTION

